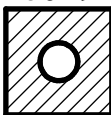
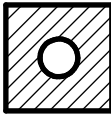
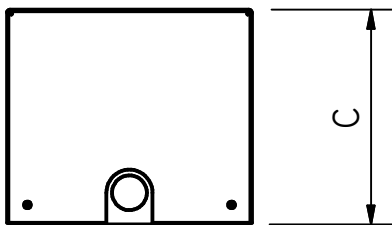
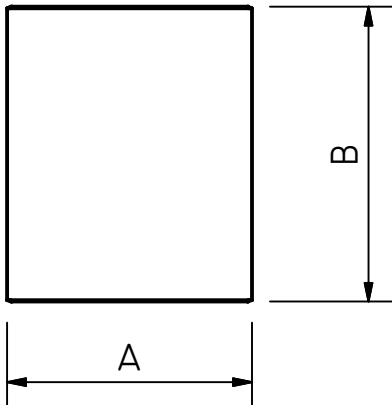
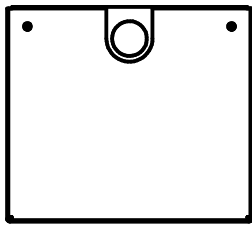
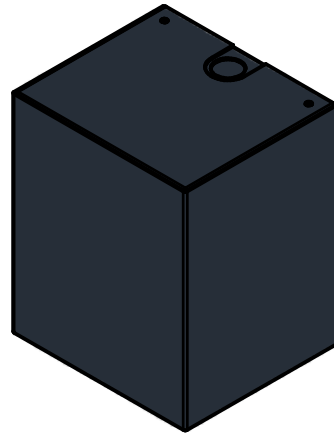


MASSA KAST : 1,5KG

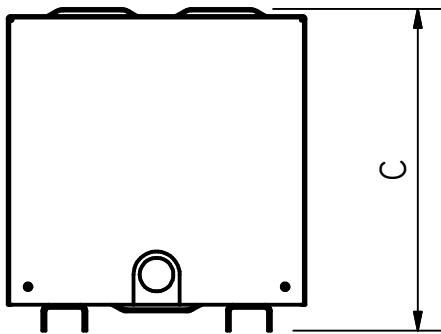
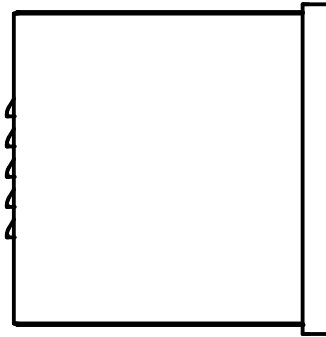
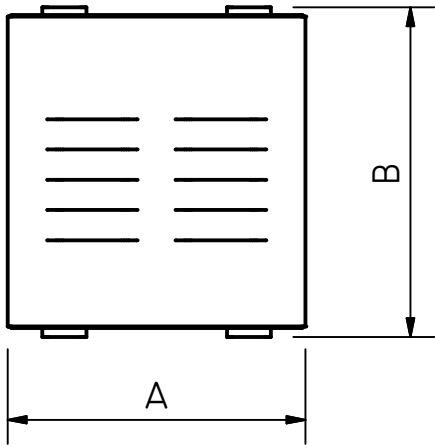
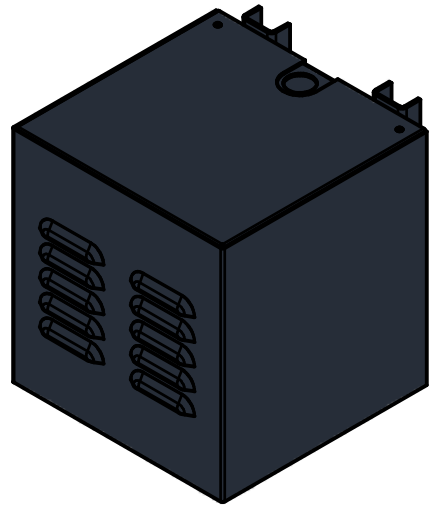
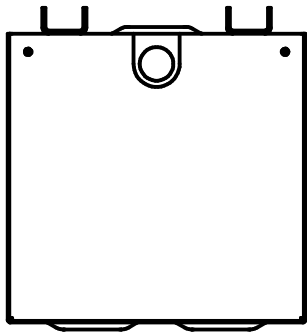


Copyright (c) by electrotechnische industrie ETI b.v.. No part of this drawing may be reproduced or distributed in any form or by any means or stored in a database or retrieval system, without the prior written permission of ETI b.v..

MODEL	-	A	B	C	MASS (KG)
FAI16		162	195	142	1,6
FAI18		162	195	142	1,8
FAI23	FA223	162	195	142	2,1
FAI25	FA225	162	195	142	2,3
FAI26	FA226	162	195	142	2,5
FAI74		162	195	142	2,9
FAI34	FA234	162	195	142	3,1
FAI36	FA236	162	195	142	3,7
FAI37	FA237	162	195	142	4,2
FAI43	FA243	162	195	142	6,0
FAI45	FA245	162	195	142	7,0
FAI48	FA248	162	195	142	8,4

ITEM	QTY	PART NO	DESCRIPTION	MATERIAL	REMARKS
PROJ AM		SCALE : 1 : 5		DRW : HTK	
UNITS : MM		DATE : 2013-04-16		PART NO :	
DESCRIPTION :		SHEET: 1 OF:4		DWG NO :	
DIMENSIONS FA		REV : 2		FA(1).IDW	
Aalten-NL		FORMAT :		A4	

MASSA KAST : 2,6KG

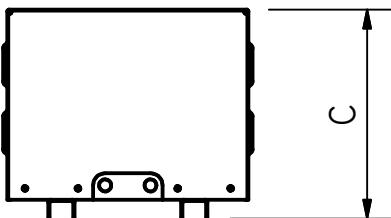
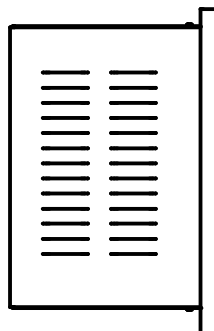
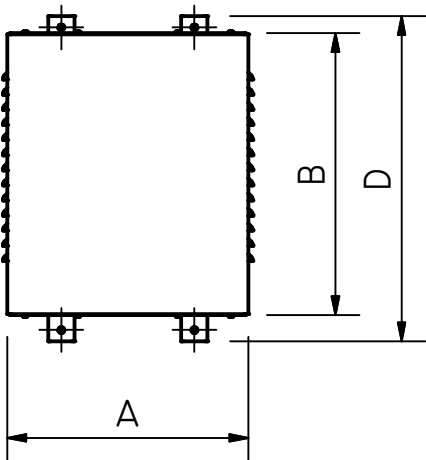
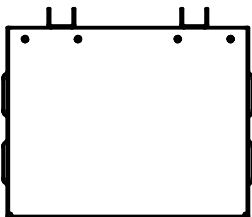
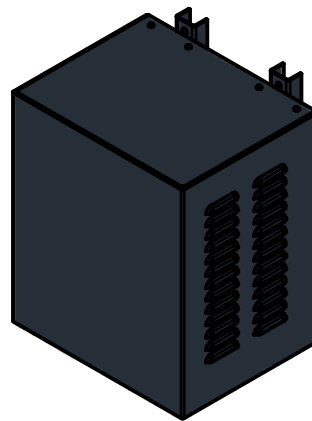


MODEL	-	A	B	C	MASS (kg)
FAI56	FA256	197	218	213	10,6
FAI57	FA257	197	218	213	12,5
FAI58	FA258	197	218	213	15,7
FAI59	FA259	197	218	213	14,5
FAI60	FA260	197	218	213	16,0
FAI61	FA261	197	218	213	17,7
FAI62	FA262	197	218	213	19,7
FAI63	FA263	197	218	213	23,4

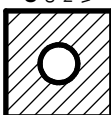
Copyright (c) by electrotechnische industrie ETI b.v.. No part of this drawing may be reproduced or distributed in any form or by any means or stored in a database or retrieval system, without the prior written permission of ETI b.v..

ITEM	QTY	PART NO	DESCRIPTION	MATERIAL	REMARKS
PROJ AM		SCALE : 1 : 5		DRW : HTK	
		UNITS : MM		REMARKS :	
DATE : 2013-04-16		PART NO :			
			DESCRIPTION : DIMENSIONS FA		SHEET: 2 OF:4 REV : 2
			DWG NO : FA(1).IDW		FORMAT : A4

MASSA KAST : 8,5KG



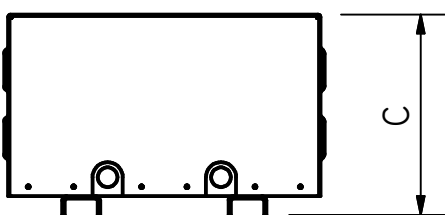
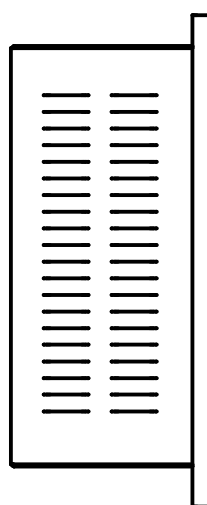
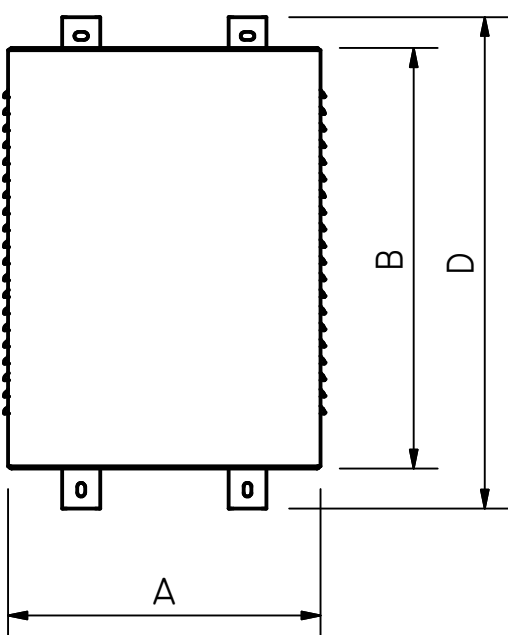
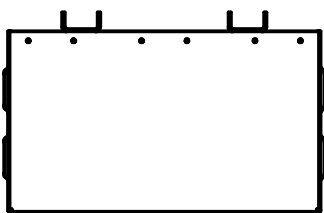
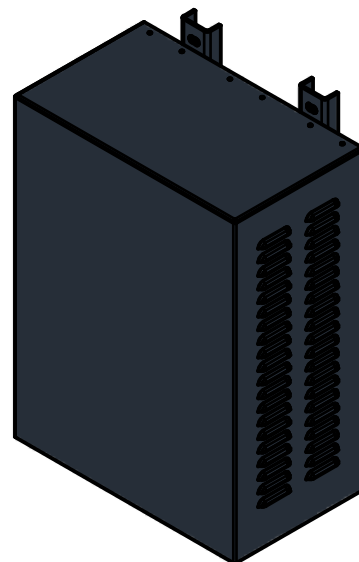
Copyright (c) by electrotechnische industrie ETI b.v.. No part of this drawing may be reproduced or distributed in any form or by any means or stored in a database or retrieval system, without the prior written permission of ETI b.v..



MODEL	-	A	B	C	D	MASS (KG)
FA167	FA267	319	373	277	430	25
FA169		319	373	277	430	28
FA170	FA270	319	373	277	430	31
FA171	FA271	319	373	277	430	34
FA173		319	373	277	430	48
FA190		319	373	277	430	38
FA191		319	373	277	430	44
FA192		319	373	277	430	49
FA193		319	373	277	430	52
FA456		319	373	277	430	21
FA458		319	373	277	430	26

ITEM	QTY	PART NO	DESCRIPTION	MATERIAL	REMARKS
PROJ AM		SCALE : 1 : 10		DRW : HTK	
UNITS : MM		DATE : 2013-04-16		PART NO :	
DESCRIPTION :		SHEET: 3 OF:4		DWG NO :	
DIMENSIONS FA		REV : 2		FA(1).IDW	
Aalten-NL		FORMAT :		A4	

MASSA KAST : 17,5KG



MODEL	A	B	C	D	MASS (KG)
FA454	413	556	265	650	41
FA459	413	556	265	650	50
FA463	413	556	265	650	48
FA464	413	556	265	650	54
FA465	413	556	265	650	59
FA438	413	556	265	650	67
FA439	413	556	265	650	83

Copyright (c) by electrotechnische industrie ETI b.v.. No part of this drawing may be reproduced or distributed in any form or by any means or stored in a database or retrieval system, without the prior written permission of ETI b.v..

ITEM	QTY	PART NO	DESCRIPTION	MATERIAL	REMARKS
PROJ AM		SCALE : 1 : 10		DRW : HTK	
UNITS : MM		DATE : 2013-04-16		PART NO :	
DESCRIPTION :			SHEET: 4 OF:4		DWG NO :
<b>DIMENSIONS FA</b>			REV : 2		FA(1).IDW
					FORMAT : A4

